

Young V&A Sensory Friendly Studio for Families: (August 2025)

Details

Thursday 28 August, 11.00-12.30 & 14.00-15.30

Portal Trust Community Room, Learning Centre, Lower Ground Floor, Young V&A, Cambridge Heath Road, E2 9PA

Free but booking recommended

A special event just for children with sensory differences or SEND and their families, working with artist and museum staff Ellie Bird to have fun with tactile, open-ended making

Overview

The workshop theme is textiles in nature, and we will take inspiration from the museum's collection, looking at artists and designers who have created work influenced by textiles and shapes in nature.

The workshop is relaxed and designed with you and your child(ren) in mind. There will be a range of creative activities and children are free to explore in their own time and at their own pace. These include mark-making on textiles, clay play, and world-building with fabrics.

You can arrive anytime during the 90-minute workshop, and it's fine to take a break in our dedicated break out space or elsewhere in the museum and re-enter the workshop.

Contact

We know that visiting a museum as a family requires lots of planning. If you would like further information or would like to tell us about your child's needs in advance of the session, please contact us by email: yvalearningevent@vam.ac.uk

Further Information

Accessibility at the museum:

- Please check our [Access page](#) for full information.
- We will have a sensory tent in the workshop space during the event. Our Reading Room, a quiet space, can also be used throughout the day.
- We have three accessible toilets in the museum and a Changing Places compliant toilet with a ceiling track hoist system (www.changing-places.org), on the lower ground floor.
- Our museum entrance is fitted with an induction loop, and we have several interactive hearing caps fitted with induction loops in the museum.
- We have tactile books available to use during your visit that can be taken with you during the performance.
- Ear defenders are also available to use during your visit and can be requested at the front desk. These can be taken round the gallery and during the performance.
- If you'd like to borrow a wheelchair, fill in this [accessibility aid form](#) at least 24 hours in advance of your visit.

Getting here:

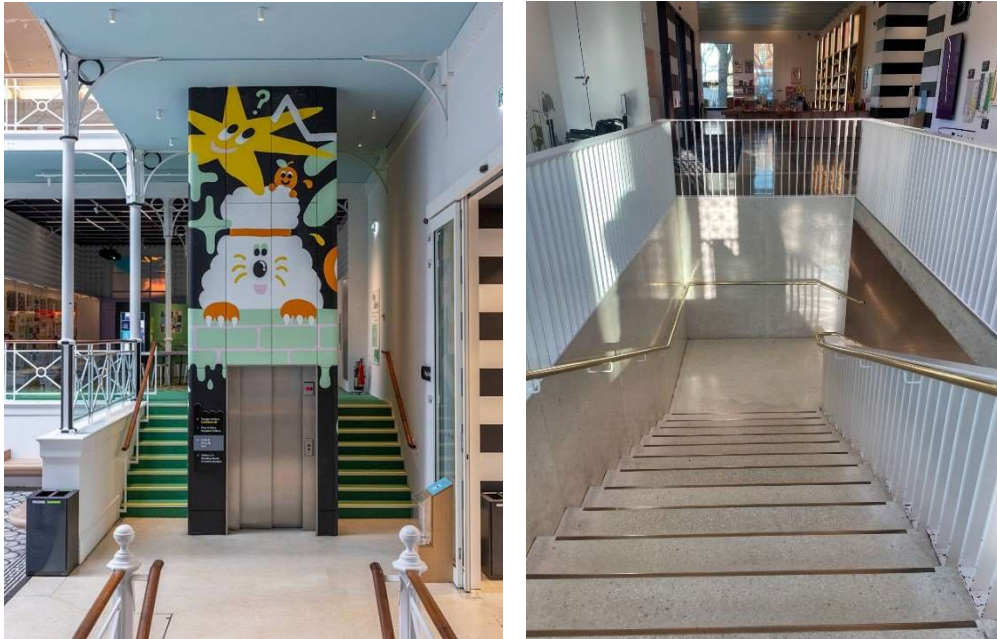
- Our [visual story](#) shows you pictures of the museum and how to access our spaces.
- The nearest underground station is Bethnal Green (it's a 2-minute walk from there). The nearest overground station is Cambridge Heath (a 5-minute walk). Please note, the nearest station with step-free access is Whitechapel (0.8 miles).
- Our entrance is step-free and wheelchair accessible.
- Parking for cars is limited, so we advise using public transport. The nearest accessible parking spaces are at [Parmiter Street](#).

About the event:

- This is a family event. Please book tickets for everyone in your group. Children must be accompanied by an adult during the workshop.
- The event will take place in the Portal Trust Community Room on the Lower Ground Floor.
- Visitors will be welcome to move around, make noise and leave or re-enter the session throughout.

Young V&A

Here is a visual journey from the museum entrance to the Community Room where we will be hosting the workshop.



You can either get the lift or take the stairs down to the Community Room for the creative play workshop



At the bottom of the stairs or lift you will see the doors to the Clore Learning Centre, go through here for the workshop.



Here we have our Community Room, this will be where the workshop is held. It is a big open space with a smooth floor and lots of windows. There will be light projections, and it may be slightly dark here.